

Diplexer

C5253-0S

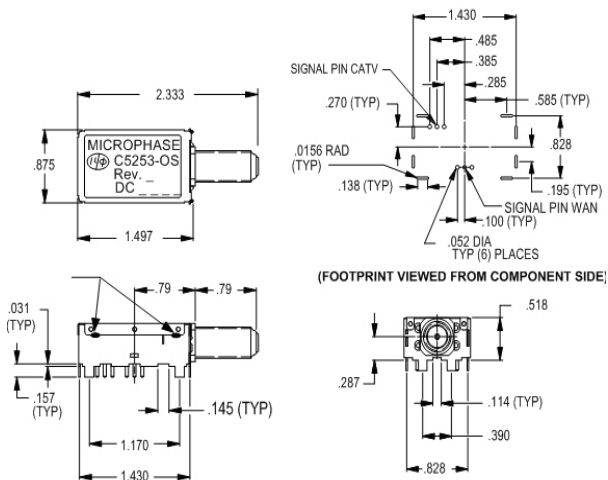
Weatherized "F" Connectors

Surge Protection - 2KV Combination

Wave Per ANSI/SCTE 81 2003



Characteristic Impedance (All Ports) - 75 Ohms
Operating Temperature -40°C to +85°C



SPECIFICATIONS - Common to CATV

Parameter	Frequency	Specification
Insertion Loss	5-864 MHz	1.6 dB max.
Rejection	975-1525 MHz	50 dB min.

SPECIFICATIONS - Common to WAN

Parameter	Frequency	Specification
Insertion Loss	975-1025 MHz	4.0 dB min.
Flatness	978-1022 MHz	1.0 dB max.
Rejection	5-600 MHz	50 dB min.
	601-864 MHz	40 dB min.
	1125-2000 MHz	45 dB min.

SPECIFICATIONS - WAN to CATV

Parameter	Frequency	Specification
Rejection	5-600 MHz	55 dB min.
	601-864 MHz	37 dB min.
	975-1025 MHz	45 dB min.
	1125-1525 MHz	50 dB min.
	2000 MHz	42 dB min.

SPECIFICATIONS - Common

Parameter	Frequency	Specification
Return Loss	5-8 MHz	10 dB min.
	8-864 MHz	12 dB min.
	975-1025 MHz	10 dB min.

SPECIFICATIONS - CATV

Parameter	Frequency	Specification
Return Loss	5-8 MHz	10 dB min.
	8-864 MHz	12 dB min.

SPECIFICATIONS - WAN

Parameter	Frequency	Specification
Return Loss	975-1025 MHz	10 dB min.



587 Connecticut Avenue • Norwalk, CT 06854
T: (203) 866-8000 F: (203) 866-6727 • quote@microphase.com

CPE - Home Networking

These units can be designed to your specification. Please contact Microphase for your special design requirements.

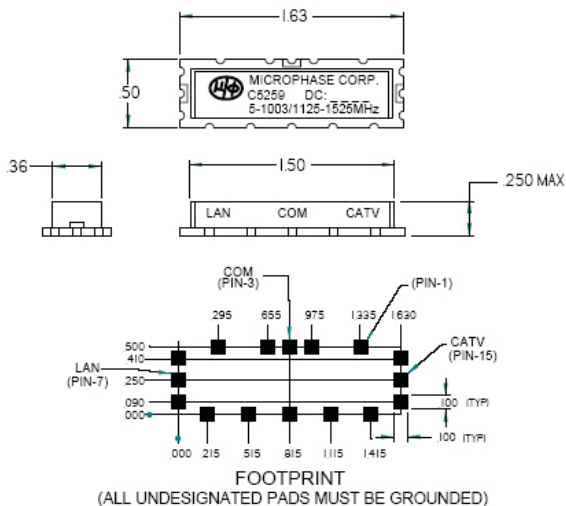
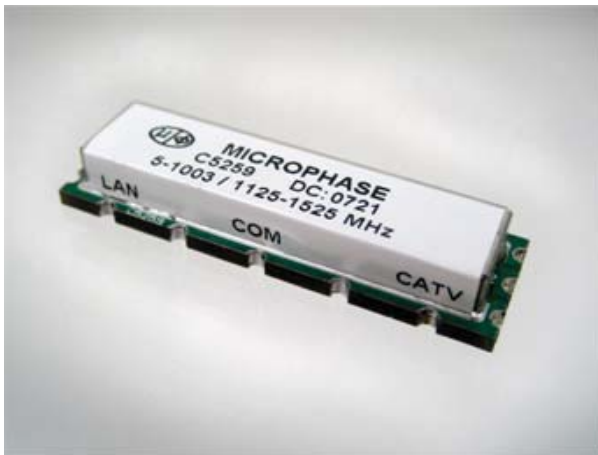
Diplexer

C5259

Surface Mount

< 1 in.² Footprint

Low Profile



Characteristic Impedance
 (75 Ohms from Common to 75 Ohms CATV)
 (75 Ohms from Common to 50 Ohms LAN)
 Operating Temperature -40°C to +85°C

SPECIFICATIONS - CATV to Common

Parameter	Frequency	Specification
Insertion Loss	5-1003 MHz	1.5 dB max.
Return Loss	5-1003 MHz	14 dB min.
Rejection	1125-1525 MHz	40 dB min.
	2300-3000 MHz	35 dB min.
Passband Slope (6 MHz Band)	5-1003 MHz	0.35 dB min.

SPECIFICATIONS - LAN to Common

Parameter	Frequency	Specification
Insertion Loss	1125 - 1525 MHz	2.5 dB max.
Return Loss	1125 - 1525 MHz	10 dB min.
Rejection	5-12 MHz	60 dB min.
	42-1003 MHz	40 dB min.
	2300 - 3000 MHz	45 dB min.
Passband Slope (6 MHz Band)	1125 - 1525 MHz	1.0 dB max.

SPECIFICATIONS - CATV to LAN

Parameter	Frequency	Specification
Rejection	50- 42 MHz	60 dB min.
	42 - 1003 MHz	40 dB min.
	1125-1525 MHz	40 dB min.
	2300 - 3000 MHz	45 dB min.

CPE - Home Networking



587 Connecticut Avenue • Norwalk, CT 06854
 T: (203) 866-8000 F: (203) 866-6727 • quote@microphase.com

These units can be designed to your specification. Please contact Microphase for your special design requirements.

Diplexer

C5262 MoCA™ Diplexer

Surface Mount

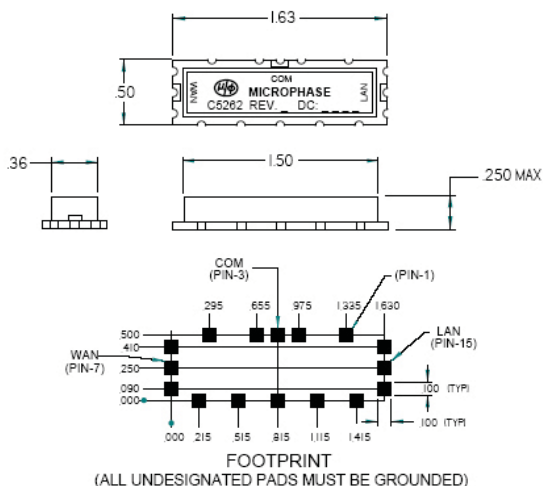
1 in.² Footprint

Low Profile



Characteristic Impedance
 (75 Ohms from Common to 50 Ohms WAN)
 (75 Ohms from Common to 50 Ohms LAN)

Operating Temperature -40°C to +85°C



SPECIFICATIONS - WAN to Common

Parameter	Frequency	Specification
Insertion Loss	975 - 1025 MHz	4.0 dB max.
Return Loss	975 - 1025 MHz	10 dB min.
Rejection	5 - 600 MHz	50 dB min.
	600-864 MHz	35 dB min.
	1125 - 1150 MHz	43.5 dB min.
	1150 - 1400 MHz	47 dB min.
	1100 - 1525 MHz	43.5 dB min.
	2000 MHz	40 dB min.

SPECIFICATIONS - LAN to Common

Parameter	Frequency	Specification
Insertion Loss	1125 - 1525 MHz	3.5 dB max.
	1150 - 1500 MHz	2.5 dB max.
	1125 - 1525 MHz	1 dB max./50 MHz
Return Loss	1125 - 1525 MHz	10 dB min.
	Rejection	5 - 400 MHz
	400 - 600 MHz	40 dB min.
	600 - 864 MHz	35 dB min.
	975 - 1025 MHz	27 dB min.
	2300 MHz	37 dB min.
	2500 MHz	35 dB min.
	3000 MHz	30 dB min.

SPECIFICATIONS - WAN to LAN

Parameter	Frequency	Specification
Rejection	5 - 600 MHz	50 dB min.
	600 - 584 MHz	35 dB min.
	975 - 1025 MHz	30 dB min.
	1125 - 1150 MHz	43.5 dB min.
	1150 - 1400 MHz	47 dB min.
	1400 - 1525 MHz	43.5 dB min.
	2000 MHz	40 dB min.
	2300 MHz	37 dB min.
	2500 MHz	35 dB min.
	3000 MHz	30 dB min.



587 Connecticut Avenue • Norwalk, CT 06854

T: (203) 866-8000 F: (203) 866-6727 • quote@microphase.com

CPE - Home Networking

These units can be designed to your specification. Please contact Microphase for your special design requirements.

Diplexer

C5270 MoCA™ Amplifier Bypass

Small Size

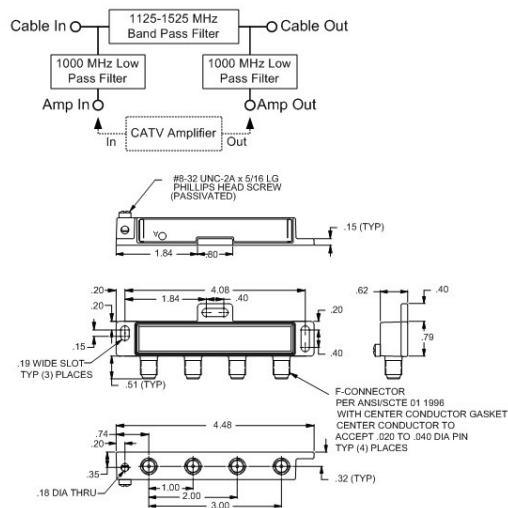
110 dB RFI Shielding

Low Insertion Loss

High Rejection

Excellent Return Loss

Weatherized Connectors



Characteristic Impedance: 75 Ohms
Operating Temperature: -40°C to +85°C

SPECIFICATIONS - Cable In to Amp In

Parameter	Frequency	Specification
Insertion Loss	5-860 MHz	0.7 dB max. (0.4 dB typ.)
	860 - 1000 MHz	1.5 dB min. (1.1 dB typ.)
Return Loss	5 - 1000 MHz	14 dB min. (17 dB typ.)
Rejection	1125 - 1525 MHz	50 dB min. (55 dB typ.)
	2300 - 3000 MHz	35 dB min. (40 dB typ.)

SPECIFICATIONS - Cable In to Cable Out

Parameter	Frequency	Specification
Insertion Loss	1125 - 1525 MHz	2.5 dB max. (1.7 dB typ.)
Return Loss	1125 - 1525 MHz	10 dB min. (13 dB typ.)
Rejection	5 - 42 MHz	60 dB min. (80 dB typ.)
	42 - 1000 MHz	40 dB min. (45 dB typ.)
	2300 - 3000 MHz	45 dB min. (50 dB typ.)

SPECIFICATIONS - Cable Out to Amp Out

Parameter	Frequency	Specification
Insertion Loss	5-860 MHz	0.5 dB max. (0.3 dB typ.)
	860 - 1000 MHz	1.0 dB max. (0.8 dB typ.)
Return Loss	5 - 1000 MHz	14 dB min. (17 dB typ.)
Rejection	1125 - 1525 MHz	25 dB min. (30 dB typ.)
	2300 - 3000 MHz	20 dB min. (25 dB typ.)



587 Connecticut Avenue • Norwalk, CT 06854

T: (203) 866-8000 F: (203) 866-6727 • quote@microphase.com

CPE - Home Networking

These units can be designed to your specification. Please contact Microphase for your special design requirements.